



*Tisser*  
hand to heart

Presents

# वेदज्ञे किं केशोजे

"Crafting a new narrative through the fusion of  
Indian art and contemporary design."

Curated by



Supported by

*AstaGuru*  
India's Premium Auction House



# Introduction

Hathelii by Tisser is an initiative that seamlessly integrates Indian crafts and traditional looms into modern living spaces. It serves as a platform where the artistry of rural artisans meets the aesthetic needs of contemporary interiors. We work across 18 states in 100 plus artforms to support livelihood & enhance vocal for local.

Our philosophy centers around the idea that interior designs should be accessible personal and transformative, we strive to create environments that are tailored to your needs, preferences and lifestyle. ensuring that every detail contributes to a harmonious and inspiring living or working space.

Art-infused interiors transform spaces into living galleries of creativity and inspiration.





# Curated by,



**Dr. Megha Phansalkar**

As a Founder at Tisser Artisan Trust she supports handicraft and handloom artisans across in South Asia through value chain approach. An Urban Regional Planner with an experience of 25 years in the development sector. Dr Megha Phansalkar specializes in community led development in water supply, sanitation and livelihoods.



**Ms. Ruchi Sharma**

Ms Ruchi Sharma strives to preserve the diversity of Indian Art forms from ancient heritage and non-traditional, avant-garde architecture, culture & history. Ms Sharma blends old-world art with contemporary design styles and meticulous craftsmanship in modern-day & age. Her eye for old-world nostalgia, luxury, craft & details propelled her to build an artisan platform empowering women artisans across India



**Mrs. Larly Bahl**

Larly Bahl has been making waves in the fraternity. With their trendsetting ideas..Larly Bahl is Innovative, detail oriented and with their fingers constantly on the pulse of global trends, skills have made them a go-to amongst Indian society. The delhi workshop is suited for Amex installations. Her clientele includes the whos who of the country's including the Ambanis.



**Ms. Nutan Kajbaje**

Ms. Nutan Kajbaje, Head Designer at Tisser, is an accomplished professional with over 35 years of experience in fashion and textile design. A recipient of the "Lady Entrepreneur" award from the Maharashtra Chamber of Commerce, she holds a Master's Degree in Fashion & Textile Design. Ms. Kajbaje has headed fashion departments at international institutions like Cambrian College of Canada and Huddersfield University, UK, and is currently teaching at Amity University's Mumbai campus. She has also collaborated with prominent names in the Fashion & Retail industry, including HAKOBA Retail, iweddingsolutions.com, and Designer Krishna Mehta.



**Rs. 75,000 each**  
**Rain Drop**

**900mm x 1200mm**

The artwork is composed of Moonjh grass plates and fabric dyed in Shibori technique along with metal inserts. The artwork is inspired from the raindrops falling onto a still surface of water. These raindrops create ripples on the surface, quietly disturbing the stillness of the water. Blue and red, being two primary colours, compliment each other, enhancing each other





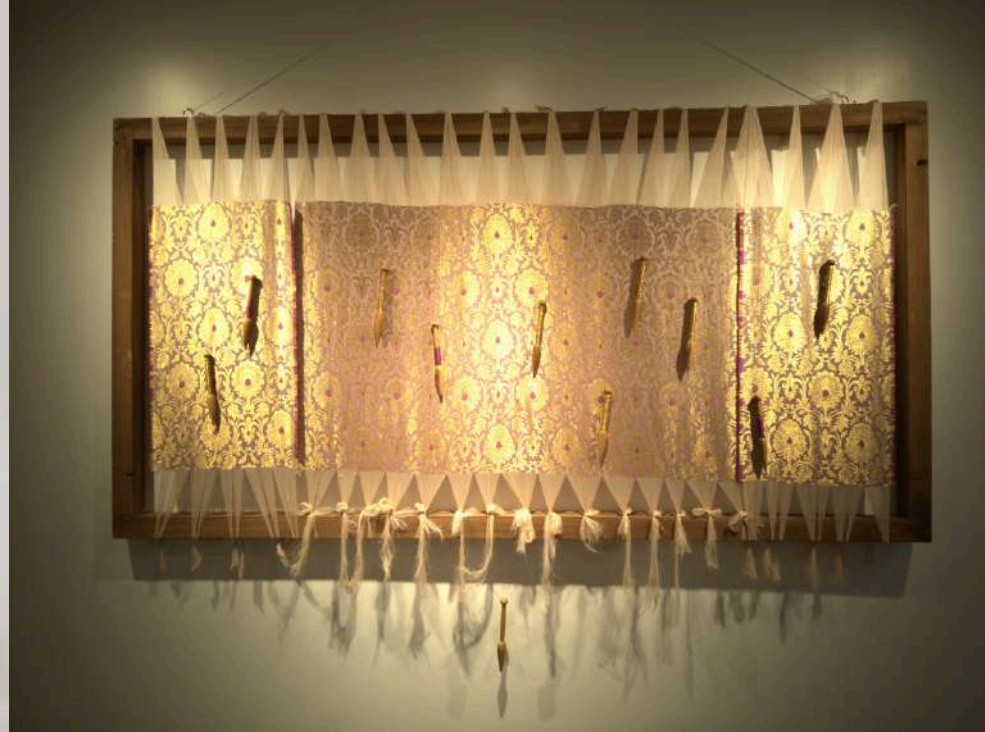
**Rs. 75,000**



**900mm x 1200mm**

The artwork is composed of Moonjh grass plates and muga silk fabric. This is inspired from elements of celebration.





1800mm x 900mm

**Rs.1,35,000**

# THREADS OF ELEGANCE

Brocade fabric, with its rich, ornate patterns and metallic threads, is stretched on a frame with loose ends, showcasing an evolving, textured artwork in progress.





## TREE OF LIFE ART PANELS

Patachitra jharoka, known for its intricate details and vibrant colours, is a traditional art form from the Indian states of Odissa and West Bengal. It involves painting on cloth or dried palm leaves.

**Rs.1,35,000**  
**1200mm x 1200mm**

**Rs.3,25,000**  
**1200mm x 2400mm**







Inspired by nature and spirituality, this dual natured artwork made with woodcut on fabric

**Rs.60,000**

**Diameter - 1000mm**





# CONTOURING LANDSCAPE

Kantha Embroidery weaves through the terrain, capturing the undulating contours with delicate stitches, while Ikat hills add depth and dimension to the scene.

**Rs.75,000 each**

**1200mm x 900mm**





**Rs. 35,00,000**

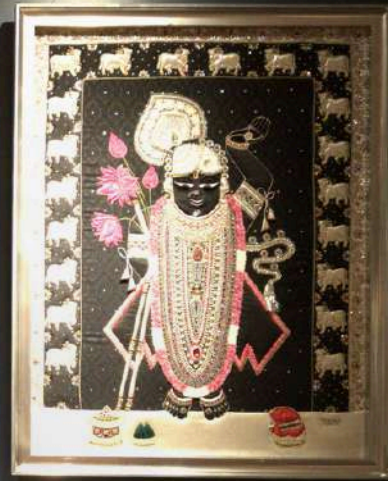
Hand-painted and intricately carved wooden installation, inspired by South Indian temple artistry, showcasing vibrant cultural craftsmanship.





46inch x 36inch

**Rs. 1,85,000**



41inch x 34inch

**Rs. 1,75,000**

Shreenathji artwork blends vibrant paint with detailed embroidery, depicting divine grace through a fusion of traditional and contemporary techniques.



# EMBROIDERED DIVINITY





500mm x 500mm

Rs.30,650

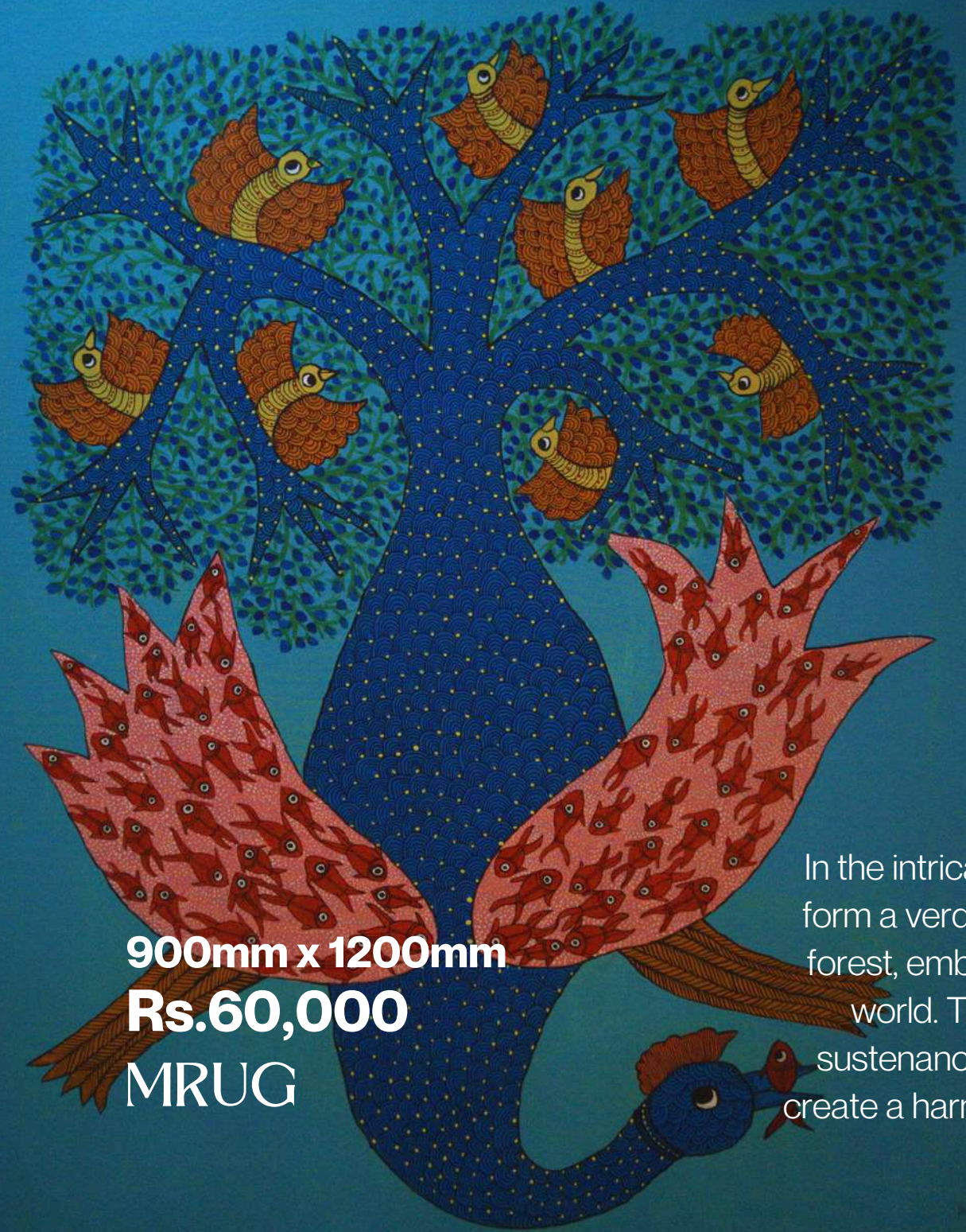
# PRIMITIVE PATTERNS



## SARAS

A Gond artwork featuring a large, intricately patterned bird dominates the foreground, with vibrant colors and bold lines. The background is a serene blue, accentuating the bird's details, and filled with delicate, traditional motifs.





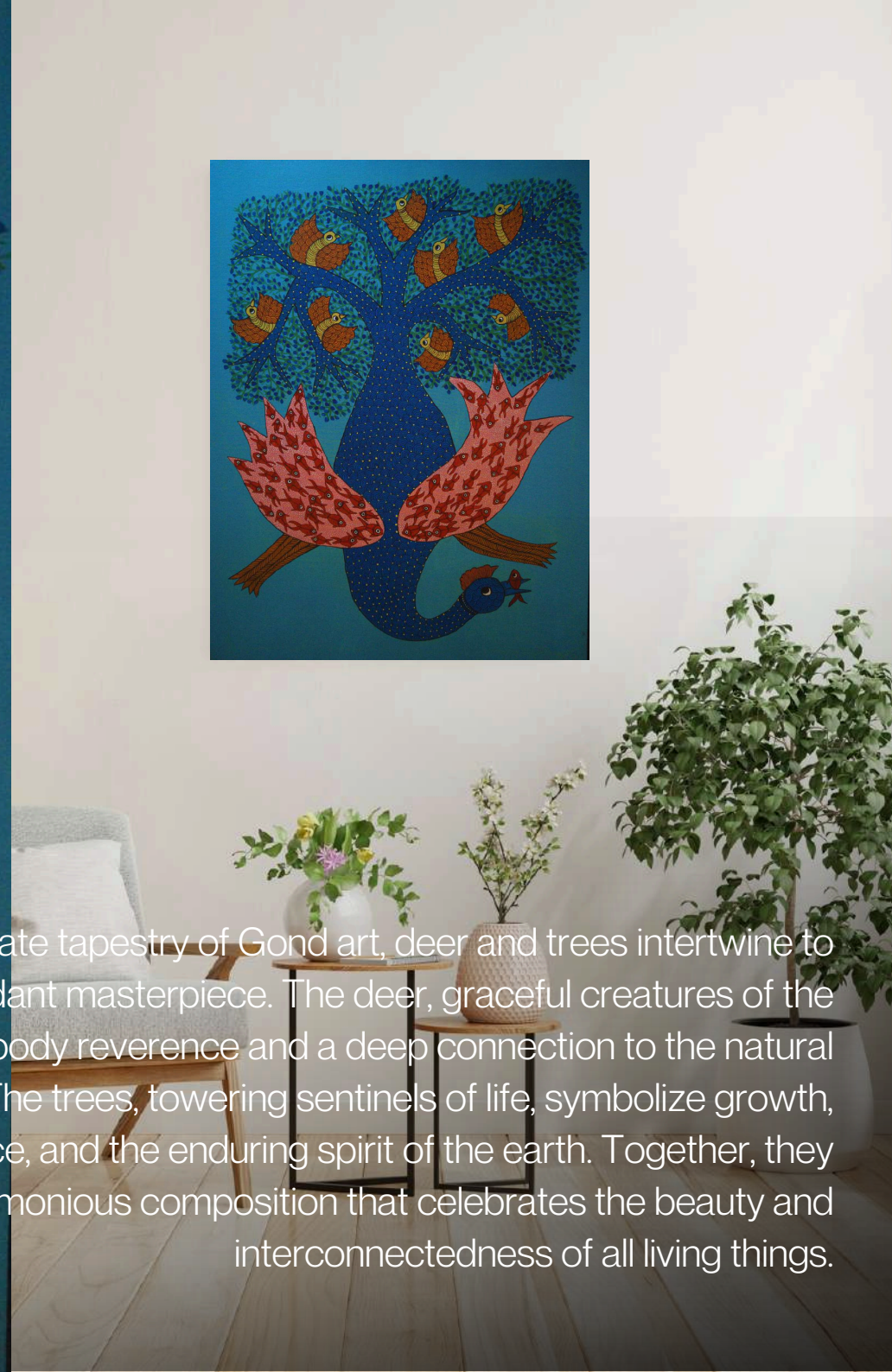
**900mm x 1200mm**

**Rs.60,000**

**MRUG**



In the intricate tapestry of Gond art, deer and trees intertwine to form a verdant masterpiece. The deer, graceful creatures of the forest, embody reverence and a deep connection to the natural world. The trees, towering sentinels of life, symbolize growth, sustenance, and the enduring spirit of the earth. Together, they create a harmonious composition that celebrates the beauty and interconnectedness of all living things.







**36inch x 72inch**  
**Rs.84,000**

**30inch x 36inch**  
**Rs.63,000**

Warli art is a traditional form of tribal painting originating from the Warli tribe in Maharashtra, India. It uses geometric shapes to depict everyday life and nature.

# DAILY LIFE





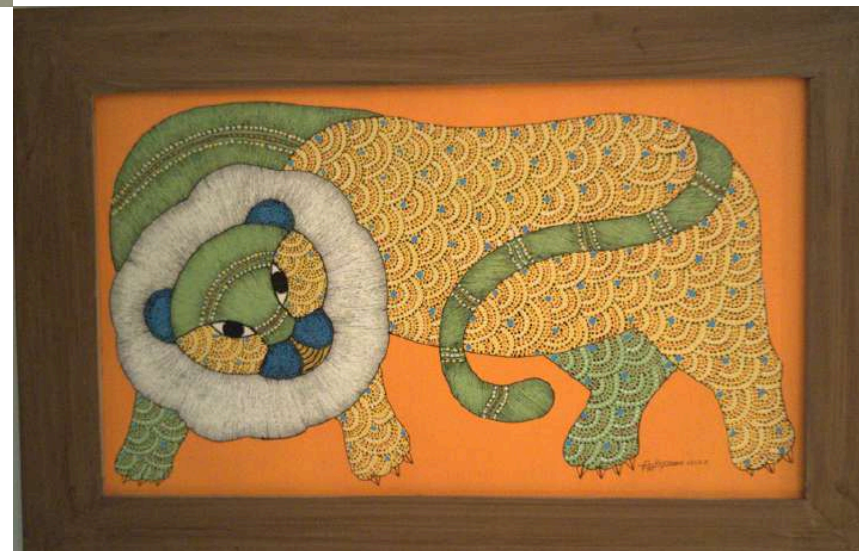


**600mm x 350mm  
with inner frame**

**750mm x 500mm  
with frame**

**Rs. 60,000**  
**VANRAJ**

A majestic lion in Gond art style dominates the foreground, its intricate patterns reflecting the essence of nature. The vibrant orange background enhances the earthy tones, symbolizing the warmth of the sun and the rich connection between wildlife and the environment.







**Rs. 12,000**

**3ft x 3ft**

**BLACK LION**

**CANVAS**





**Rs. 12,000**  
**3ft x 4ft**  
**ELEPHANT**  
**CANVAS**





**Rs. 16,000**  
**4ft x 4ft**  
**LION**  
**CANVAS**





**Rs. 18,000**  
**3ft x 5ft**  
**PEACOCK**  
**CANVAS**





**Rs. 10,000**  
**2.5ft x 5ft**  
**GREEN TREE**  
**BASE**

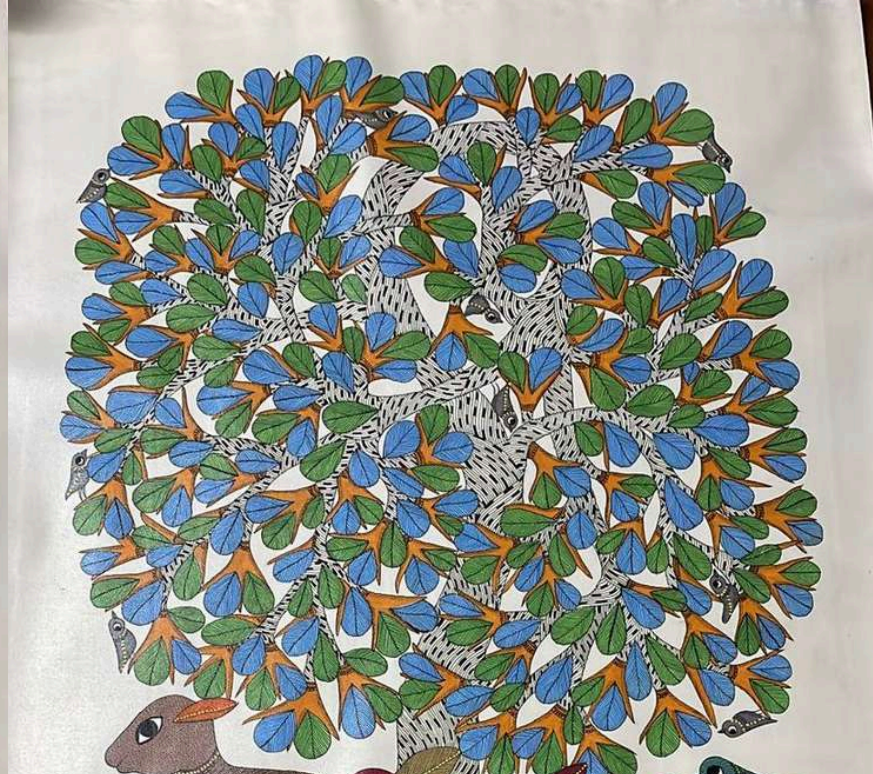




**Rs. 18,000**  
**4ft x 5ft**

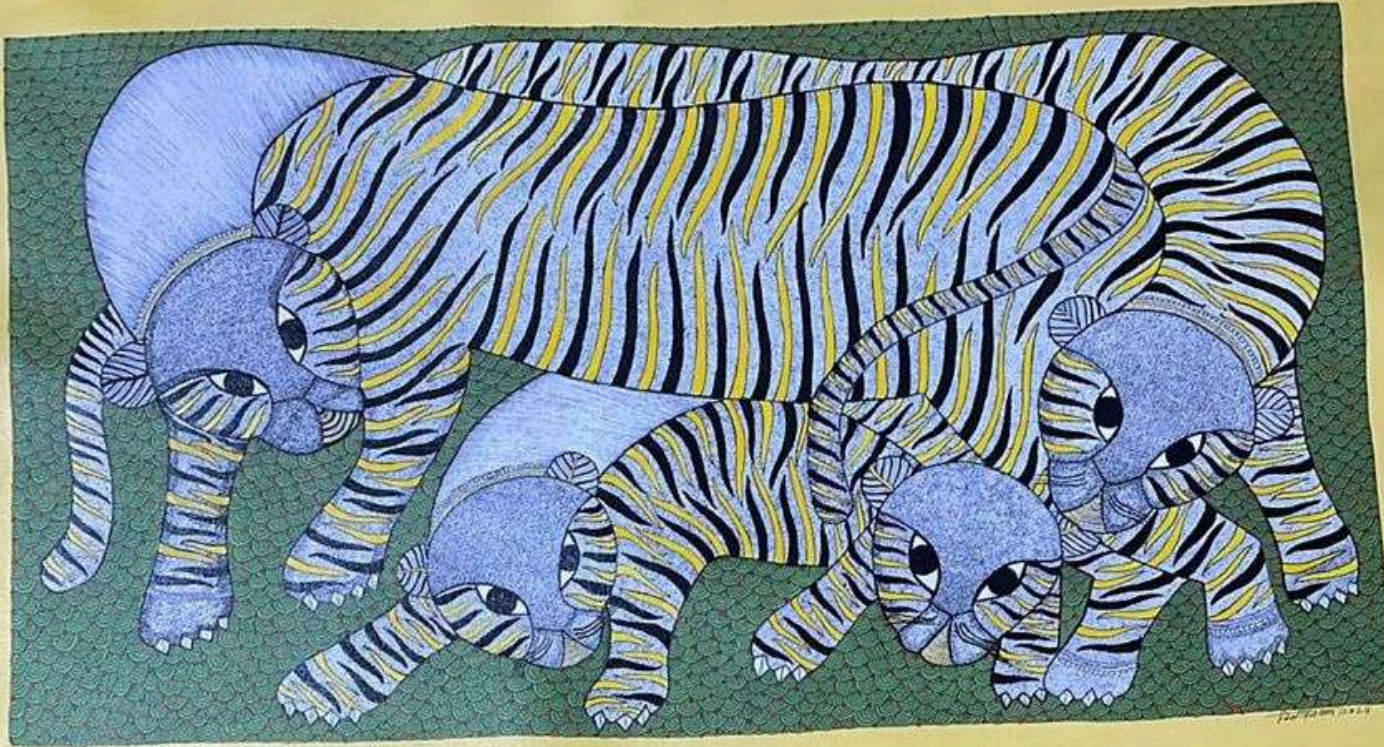
**ELEPHANT**  
**CANVAS**





**Rs. 12,000**  
**3ft x 4ft**  
**DEER**  
**CANVAS**





**Rs. 4,000**  
**LION**  
**CANVAS**





**Rs,75,000**

**SCULPTURES**





**Rs,90,000**





**Rs.2,25,000**







**Rs. 4,00,000**





**Rs. 6,00,000**





**Rs. 6,00,000**





**Rs. 3,00,000**



**Rs. 85,000 each**



**2 STONE  
SCULPTURES**





# SHUBH

## Rs. 1,08,000 for set of 3

### 625mm x 500mm each

This hand-embroidered set of 3 artwork features the divine trinity of Lakshmi, Ganpati, and Saraswati, embodying the blessings of auspiciousness, wealth, and wisdom. Meticulously crafted, this piece radiates the sacred energy of these deities, offering a powerful symbol of prosperity and well-being for your space. It showcases the intricate details and spiritual significance of this revered trio. This artwork is digitally printed and highlighted with sequins and beads to layer the artwork





This exquisite piece of hand-embroidered art, crafted from luxurious velvet and silk, captures the enchanting Radha-Krishna Raas Leela under a full moon's glow. Intricately detailed, it portrays the divine dance of love and devotion against a radiant backdrop. The intricate embroidery beautifully showcases the grace and beauty of Radha and Krishna, along with the gopis, all adorned in vibrant traditional clothing. The moonlight delicately illuminates the scene, producing a captivating and culturally rich masterpiece that honors this timeless celebration.

49inch x 39inch

**Rs. 1,45,000**

**RAASLEELA**





This digitally printed artwork, highlighted with delicate hand embroidery, portrays the beautiful "Maanleela" scene, where Shreekrishna playfully pesters a miffed Radha. The intricate details capture the deep emotions as Krishna, seeing Radha's tears, is moved to tears himself. The hand-embroidered accents add depth and texture, highlighting the tenderness of their bond. This piece celebrates their exemplary love, showcasing the divine connection between Radha and Krishna in a moment of heartfelt vulnerability and affection.



**44inch x 37inch**  
**Rs. 1,25,000**  
**MAAN LEELA**







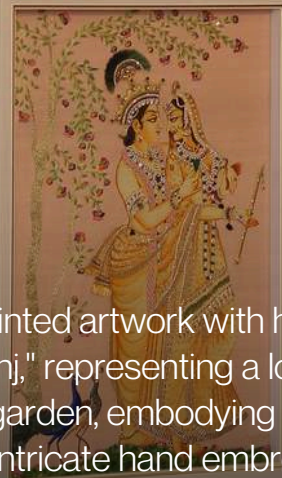
Nikunj is a mesmerizing hand-embroidered masterpiece depicting Radha and Krishna in their sacred haven, away from the world, deeply engrossed in their divine affection. This artwork beautifully encapsulates the essence of their eternal relationship. The detailed embroidery vividly animates this intimate scene, capturing their timeless bond flawlessly. Crafted on silk, this artwork features intricate hand-embroidery that creates various textures, bringing the piece to life.



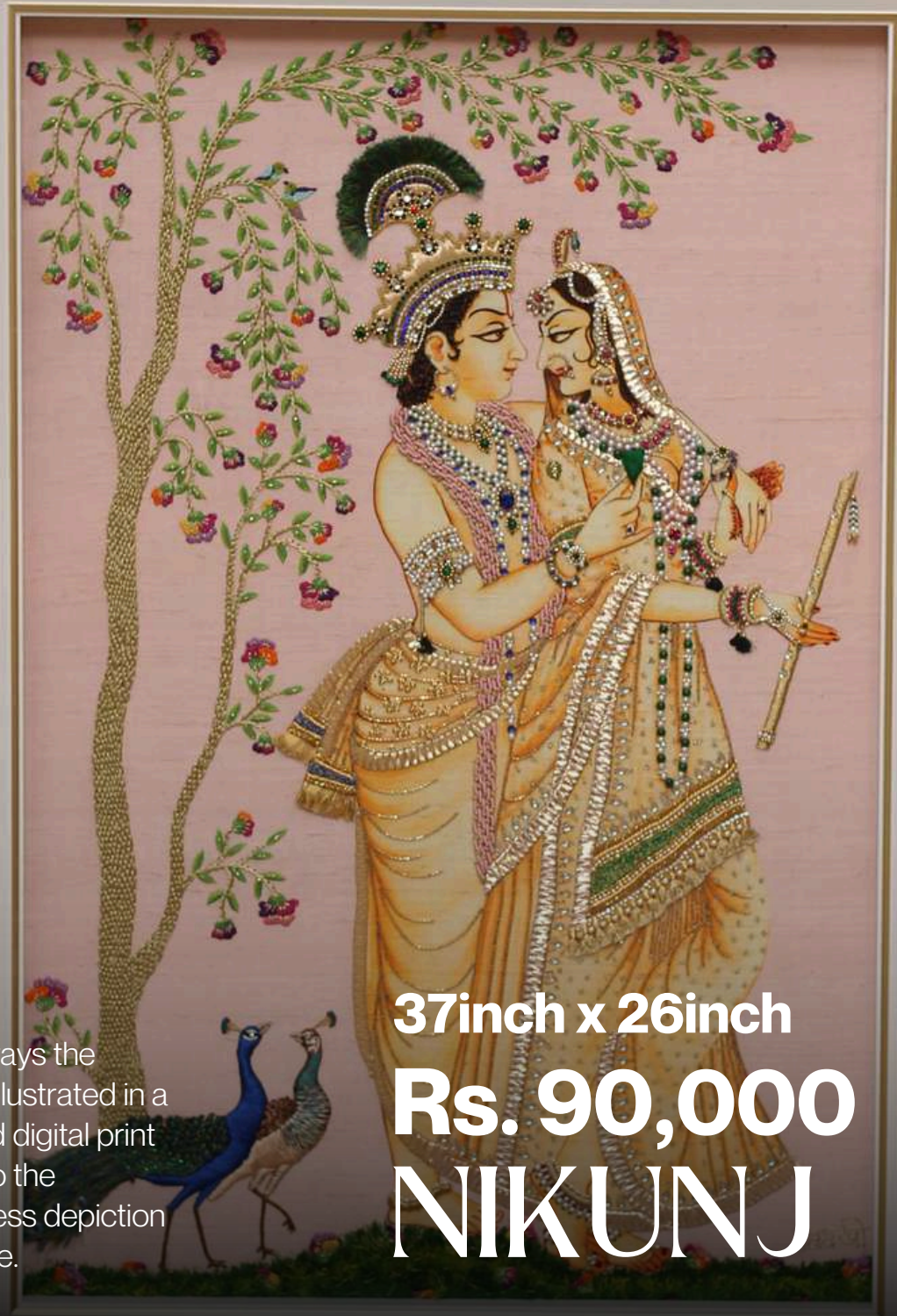
**43inch x 47inch**  
**Rs. 90,000**  
**NIKUNJ**







This digitally printed artwork with hand-embroidered details beautifully portrays the theme of "Nikunj," representing a love-filled garden. Radha and Krishna are illustrated in a peaceful, lush garden, embodying the eternal essence of their love. The vivid digital print is enriched by intricate hand embroidery, providing texture and dimension to the depiction. The elaborate details breathe life into the garden, creating a flawless depiction of their sacred connection within the serene and beautiful embrace of nature.



**37inch x 26inch**  
**Rs. 90,000**  
**NIKUNJ**





This exquisite piece of art portrays Lord Shiva and Mata Parvati, representing the convergence of the primal masculine and feminine energies - Shiva and Shakti - into a single supreme cosmic power. Against a backdrop of luxurious silk, the artwork is meticulously embroidered using chain stitch and French knot techniques, embellished with mirror work and beads. This masterpiece eloquently captures the harmonious equilibrium of the universe through the unity of Shiva and Shakti.

**12inch x 12inch each**  
**Rs. 36,000 for set of 3**  
**SHIV SHAKTI**





**Rs.5,00,000**

This stunning piece features a Nath adorned with pearls colored gemstones and metal combining to create a captivating freestanding light sculpture or wall light

**WEST  
INSPIRED**





**Rs. 3,00,000 each**

Fabric manipulation to create a mirage of art piece.  
Embroidery and pleating techniques from across India have  
been adapted.

# MIRAGE OF TRADITION





**Rs. 3,00,000 each**

The series of the Oceania artwork strives to invoke a sense of calmness, fluidity and assurance in these times of chaos and flurry of activities.







**Rs, 2,50,000**

**5ft x 8ft**

Wooden waste block print dyes are restored by the artisans of Gujarat to create this intricate wooden panel.



# DYE AND DESIGN





**Rs. 1,00,000**

**5ft x 8ft**

Traditional brocade silk fabric and carved wooden motifs juxtapose this wall mural with states of India, Varanasi and Rajasthan.

**ART OF STATES**





48inch x 36inch

**Rs. 2,70,000**

**TRIBUTE IN OIL**





**48inch x 48inch**  
**Rs. 3,50,000**

Oil on canvas artwork, inspired and dedicated to the higher force, reflects profound admiration and artistic homage through vibrant strokes.



**48inch x 36inch**  
**Rs. 2,30,000**







**Rs. 2,30,000**  
**36inch x 48inch**





**1200mm x 1500mm**  
**Rs. 3,50,000 each**


# MUD TO MIRROR



This artwork captures a sense of the sandy coastlines with their glistening particles. The AMEX brand imprinted on the artwork is reminiscent of the footprints that you leave behind on the sands.







**Rs. 4,50,000**  
**SOUTHERN**  
**LUMINESCENCE**

This traditional oil lamp casted in brass brings an auspicious cultural craftsmanship from the southern state of India.



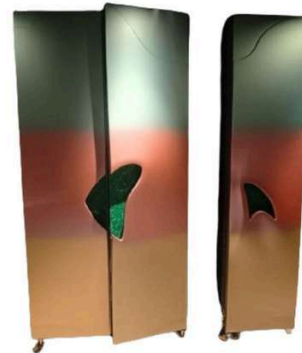


# Stone and Shade



## Rs.4,50,000 for set of 3

Organic shape contemporary door with semi precious stone handle finished in metallic ombre shades .







Rs. 5,000

Rs. 4,000

Rs. 3,000



**Rs. 12,000**

This design and innovation intervention in the crafts of channapatna now brings you an eclectic range of home decor, an unexplored area.

Channapatna crafts from Karnataka, with GI tagging from the govt of India, are mostly famous for their wooden toys with natural lacquer colours.

Reverse appliqué which is a traditional embroidery technique originating from Barmer, a district in Rajasthan, India. It involves cutting out a design from the top fabric and then layering a contrasting fabric underneath, stitching the edges to create a beautiful, intricate design.

Barmer is famous for its vibrant and colorful reverse appliqué work, which is often used to create stunning textiles, clothing, and home decor items. The technique requires great skill and patience, and the results are truly breathtaking.

## CHENAPATTAN AND APPLIQUE BARMER LAMPSHADE





A vibrant artwork showcases intricate fabric manipulation, creating textured waves and underwater currents. In the foreground, Gond art celebrates aquatic life with detailed fish and flowing patterns, merging traditional tribal motifs with the fluidity of the ocean.

**4 ft x 6 ft**  
**Rs. 1,50,000**

**TILE MEEN**





**Rs. 3,50,000**  
**GARUR BY KAVITA**  
**SINGH**





**Rs. 12,00,000 for pair**  
**MALE FEMALE**  
**SCULPTURES**





**Rs. 6,20,000 each**  
KAVITA SINGH- SET OF  
THREE SCULPTURES-  
TALL HUMANS-





**Rs. 3,00,000 for pair**

**HORSES**



**Rs. 65,000**



**Rs. 87,000**



**Rs. 51,000**

**Rs. 2,03,000**  
**VAASTU ARTWORKS**







**Rs. 1,50,000**



**Rs. 2,50,000**  
**18TH CENTURY**  
**ARTWORK**





**Rs. 2,20,000**

**RED LIGHT INSTALLATION**





**Rs. 55,000 each**

**KAVITA SINGH PEACOCKS**





**Rs. 47,000**  
**SWAN**  
**SCULPTURE**





**Rs. 9,000 per piece**  
**BAR STOOLS**





**Rs. 15,000**

**SUMO CHAIR**





**Rs. 6,000**  
**POUFFE**





**4ft x 6ft**  
**Rs. 11,000**



**8ft x 4ft**  
**Rs. 46,200**



**6ft x 4ft**  
**Rs. 80,640**



**4ft x 6ft**  
**Rs. 11,000**

# CARPETS





**Rs. 350 onwards**  
**CUSHION**  
**COVERS**





**Rs. 7500**  
**ARMCHAIR**





**Rs. 2000 onwards**  
**DUPATTA**





*Tisser*  
hand to heart

# Hathelii

— Artistry in Every Detail —

Crafting a new narrative through the fusion of Indian art and contemporary design."

## Contact Us

-  Website  
[www.hathelii.com](http://www.hathelii.com)
-  Email  
[project@hathelii.com](mailto:project@hathelii.com)
-  Instagram  
[@tisser\\_hathelii](https://www.instagram.com/tisser_hathelii)
-  Facebook  
[@tisser\\_hathelii](https://www.facebook.com/tisser_hathelii)

## Scan to Enquire

